



CHRISTIE SPACES

CONFERRNCING



**100 WALKER STREET
SYDNEY**

**Conference Spaces, Meeting &
Training Room Hire**

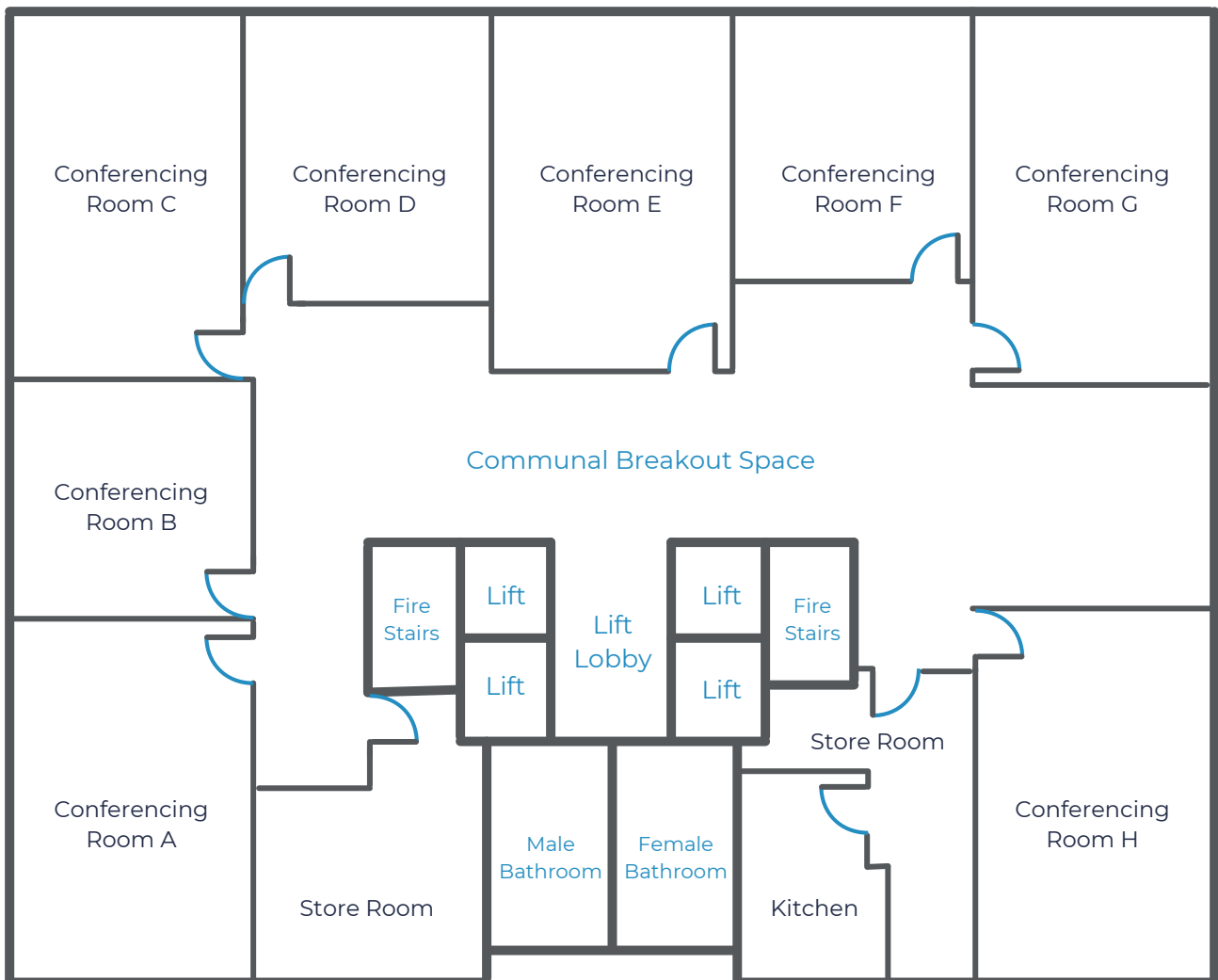
PH: 1800 806 066

**CHRISTIE
SPACES**
CONFERRNCING

www.christiespaces.com.au

CHRISTIE SPACES CONFERRING

Level 4 Conference Spaces, Meeting & Training Rooms



CHRISTIE SPACES CONFERRING

Conference, Meeting & Training Room Capacities

Small Size Spaces

- Theatre Style: 50 people
- U-Shape Style: 18 - 20 people
- Cabaret Style: 24 people
- Classroom: 21 people
- Boardroom: 16 - 20 people

Medium Size Spaces

- Theatre Style: 80 - 90 people
- U-Shape Style: 30 people
- Cabaret Style: 36 people
- Classroom: 30 people
- Boardroom: 24 people

Large Size Spaces

- Theatre Style: 140 people
- U-Shape Style: 45 people
- Cabaret Style: 72 people
- Classroom: 45 people
- Boardroom: 40 people

Boardrooms

8 - 14 seater boardrooms

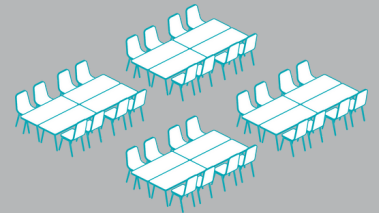
Meeting Rooms

4 - 12 seater meeting rooms

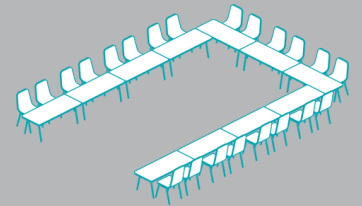
Christie Spaces Conferencing reserves the right to change a function room where it deems necessary.

Space Configurations

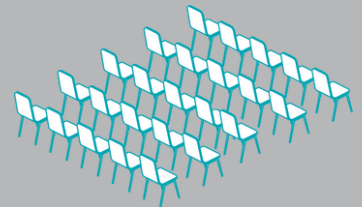
Cabaret:



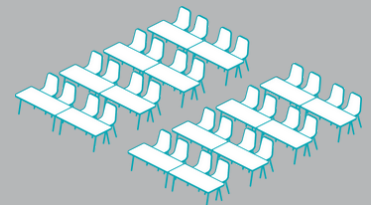
U-Shape:



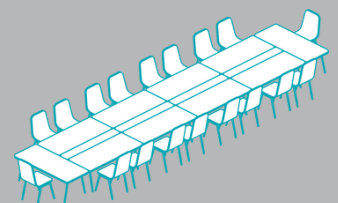
Theatre:



Classroom:



Boardroom:



CHRISTIE SPACES CONFERRING

All Spaces Include Complimentary*:

*Excludes meeting rooms

Data Projector
& Screen



All Day Refreshments



Presentation
Whiteboard



Superfast WiFi



Additional Equipment Hire:

(Provided at an additional cost)

Facilitation

Flipchart - \$50
Whiteboard - \$50

Visual

Data Projector - \$110
Remote Mouse & Laser Pointer - \$25

Audio

Hand-Held Microphone - \$150
Lapel Microphone - \$150
Lectern and Microphone - \$150
Full PA (2 Hand-Held + 2 Lapel) + 2 Speakers - \$250

Technology

Laptop - \$100

Teleconferencing

Teleconferencing Polycom Unit - \$75

Prices are subject to availability of in-house equipment.